

Hanlon Engineering + Architecture

Design-Planning-Development-Management

Merging Traditional Values with Today's Technologies to Better Serve Our Client's Future.

Mine Processing Project Nevada

SERVICES

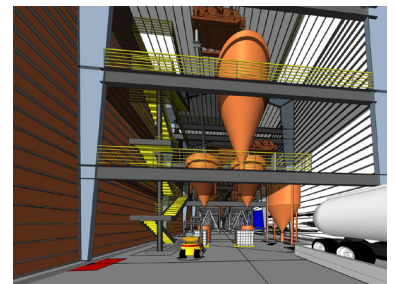
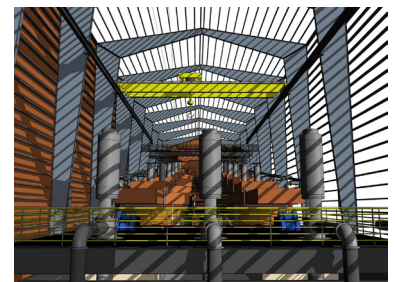
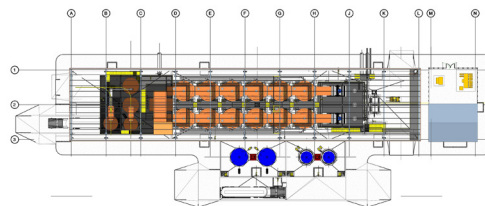
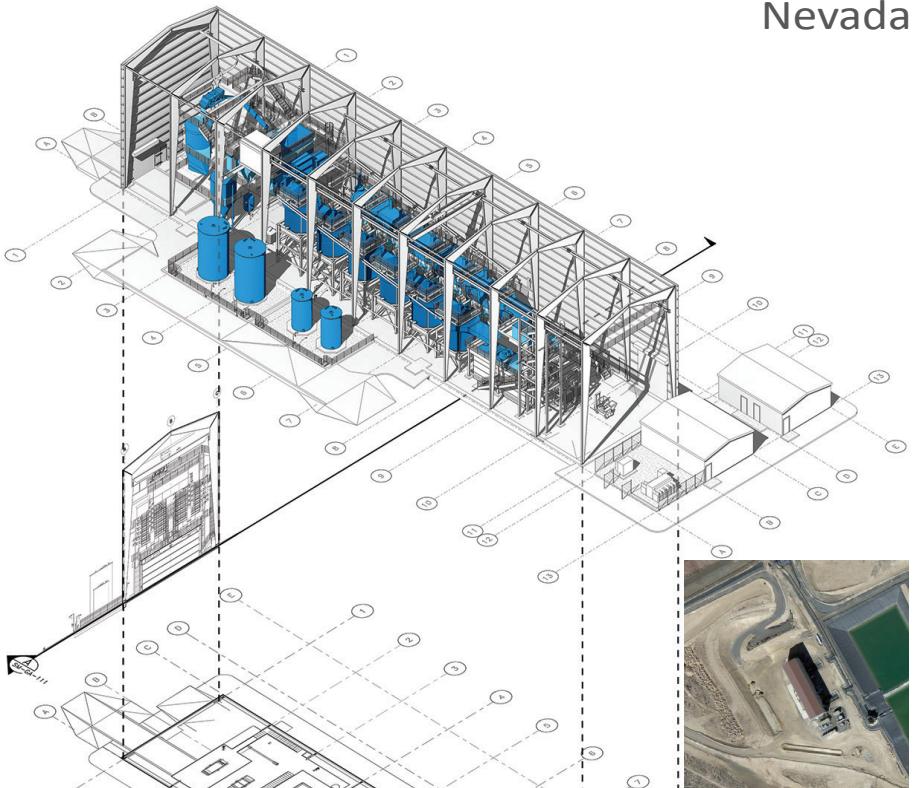
PROCESS ENGINEERING
TRADE-OFF STUDIES
PROCESS DEVELOPMENT & P&ID'S
BASIC ENGINEERING
DETAIL ENGINEERING
PROCUREMENT ASSISTANCE
PERMITTING ASSISTANCE
CAPITAL COST ESTIMATE
CONSTRUCTION MANAGEMENT

SCOPE

A MINING COMPANY CONSTRUCTED A NEW LOW-GRADE RUN-OF-MINE LEACH PROCESS AT THEIR MINE. THE PROCESS HAD BEEN DESIGNED FOR 3 CARBON-IN-COLUMN ("CIC") CIRCUIT. THE MINING COMPANY HIRED HEA TO REVISE THE DESIGN OF THE TWO CIC TRAINS, SKID MOUNT EQUIPMENT WHERE PRACTICAL, AND CONSTRUCT THE CIC BUILDING BEFORE WINTER 2009. THIS WAS TO ALLOW INTERNAL CONSTRUCTION TO CONTINUE THROUGHOUT THE LATE FALL AND WINTER MONTHS. BUILDING COMPLETED IN 2010.

DATA

CAPITAL COST:
\$ 43.0 MILLION



CORPORATE:
BRANCH:

TUCSON, ARIZONA (520) 326-0062
ELKO, NEVADA (775) 778-0787
PHOENIX, ARIZONA (480) 707-2600

E-MAIL:

INFO@HANLONENGINEERING.COM

www.hanlonengineering.com

