

Hanlon Engineering + Architecture

Design-Planning-Development-Management

Merging Traditional Values with Today's Technologies to Better Serve Our Client's Future.

South Mill Expansion

Arizona

SERVICES

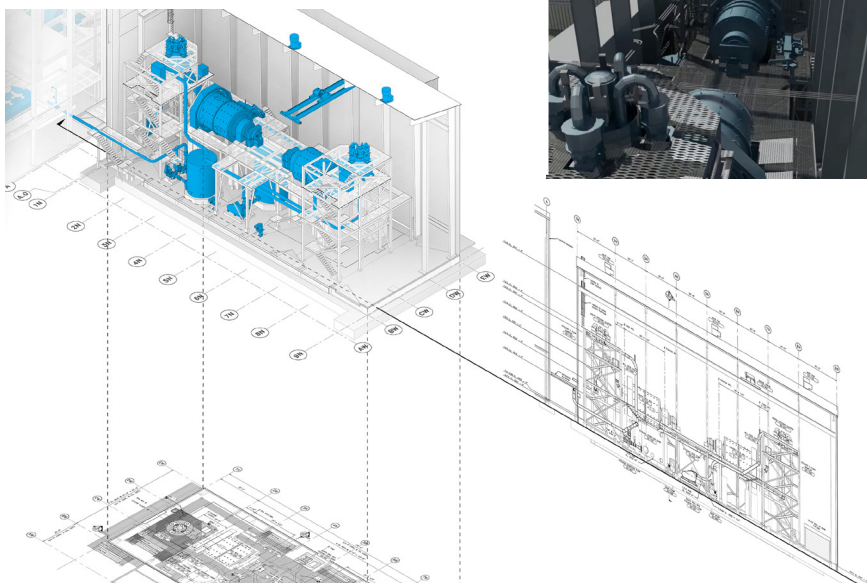
AS-BUILT DRAWINGS
DETAIL ENGINEERING
PROCESS ENGINEERING
PROCUREMENT ASSISTANCE
CONSTRUCTION MANAGEMENT
START-UP ASSISTANCE
PROGRAMMING ASSISTANCE

SCOPE

HANLON ENGINEERING & ARCHITECTURE, INC. IS CURRENTLY PROVIDING THE ENGINEERING, PROCUREMENT ASSISTANCE AND CONSTRUCTION MANAGEMENT SERVICES TO INCREASE A MILL DESIGN CAPACITY FROM 19,000 TO 31,000 TPD. THE PROJECT INCLUDES THE INSTALLATION OF TWO ADDITIONAL 16 1/2' X 19' BALL MILL CIRCUITS, PARTIAL REPLACEMENT OF ROUGHER FLOTATION CELLS AND A NEW 120 FT. HIGH CAPACITY TAIL ING THICKENER. IN ADDITION, A 60' X 160' WAREHOUSE WILL BE ERECTED AT THE MILL SITE.

DATA

CAPITAL COST:
\$ 56.0 MILLION



CORPORATE: TUCSON, ARIZONA (520) 326-0062
BRANCH: ELKO, NEVADA (775) 778-0787
PHOENIX, ARIZONA (480) 707-2600

E-MAIL: INFO@HANLONENGINEERING.COM

www.hanlonengineering.com

