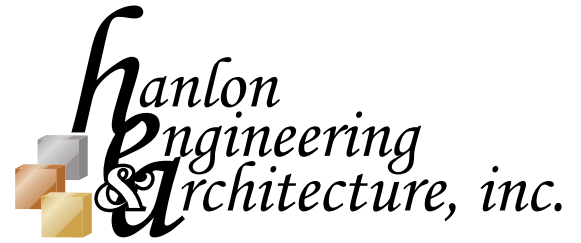


@Hanlon

GEOLOGY + ORE RESERVE + MINE PLANNING  
METALLURGICAL + CHEMICAL ENGINEERING  
NI-43-101 + FEASIBILITY + DUE DILIGENCE  
PROCESS PLANTS + FACILITY LAYOUT + DESIGN  
ARCHITECTURE + PLANT EXPANSIONS  
MATERIAL HANDLING  
MECHANICAL ENGINEERING  
CIVIL ENGINEERING

STRUCTURAL ENGINEERING  
ELECTRICAL ENGINEERING + CONTROL SYSTEMS  
COST ESTIMATING  
PROJECT MANAGEMENT  
QUALITY ASSURANCE TESTING  
CONSTRUCTION MANAGEMENT + INSPECTION  
CONTRACT ADMINISTRATION  
AND MUCH MORE...



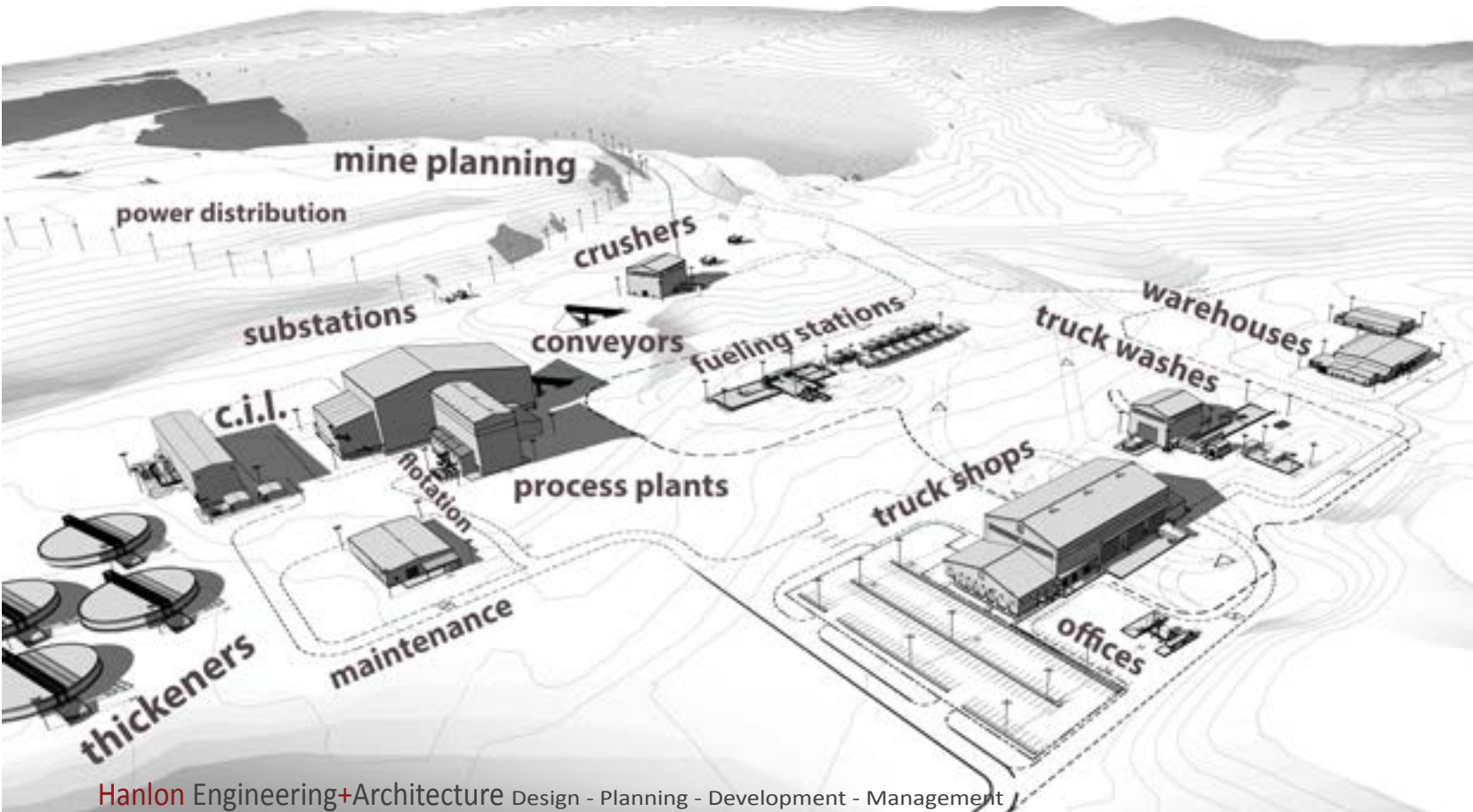
Design • Planning • Development • Management

**TUCSON** • **PHOENIX** • **ELKO**  
520.326.0062 480.707.2600 775.778.0787

[www.hanlonengineering.com](http://www.hanlonengineering.com) [info@hanlonengineering.com](mailto:info@hanlonengineering.com)

COME VISIT US AT THE  
**ELKO MINING EXPO!**  
BOOTH #763

*“Proudly supporting the Mining,  
Industrial and Manufacturing  
communities since 1999”*



Hanlon Engineering+Architecture Design - Planning - Development - Management

