

**Design   Planning   Development   Management**  
**Tucson   Phoenix   Elko**

# Hanlon Engineering + Architecture

Design-Planning-Development-Management  
proudly serving the manufacturing and industrial communities since 1999

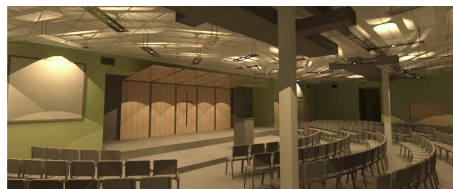
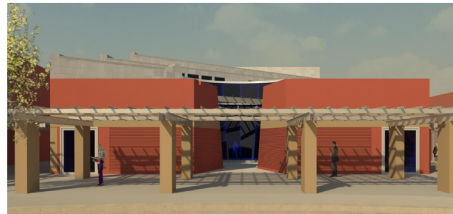
## ***ARCHITECTURE***

COMMERCIAL  
CORPORATE  
INDUSTRIAL  
INSTITUTIONAL  
MIXED -USE  
RELIGIOUS



## ***ENGINEERING***

CIVIL  
CONCRETE  
STRUCTURAL  
MECHANICAL  
PIPING  
ELECTRICAL  
INSTRUMENTATION  
CONTROLS SYSTEM  
PROCESS



## ***MANAGEMENT***

PROJECT  
CONSTRUCTION  
ADMINISTRATIVE SUPPORT



**E**stablished in 1999 with Corporate in Tucson, Arizona we have since opened branch offices in Phoenix, Arizona and Elko, Nevada. HEA's success is built on the fundamental model of a full-service in-house Multi-Disciplinary Engineering, Architecture and Management Firm supporting Commercial, Corporate, Industrial, Institutional, Mixed-Use and Religious Architecture.

**N**ationally recognized, a significant portion of our work involves renovation and modernization of existing facilities throughout the United States, Canada, Central and South America. We have achieved recognition by dedicating experienced individuals/teams whose task is to maintain the attention to detail for a project duration resulting in an on time and within budget delivery.

**I**n addition to the Standard Services we also offer Procurement, Capital/Operational Cost Estimating, and our Construction Management program generates up-to-date Executive Reports on Budget, Schedule, and Compliance with Projections through completion.

**HEA** maintains Business Licenses in 7 States to better serve local Clients. We also have individual licensure in 9 states allowing for project mobility. Key Individuals possess National Certifications in Architecture and/or Engineering to quickly obtain licenses in other states as dictated by Client requirements.

**C**omprised of 60 employees, our team has Multi-Disciplinary Engineers, Architects, Interns and Technical Staff. Many Staff have 25 or more years of experience to offer to our Clients. Since its establishment in 1999 we have logged over 1,425 completed Projects that carry a constructed value of over \$1B

# Hanlon



## Contact

### TUCSON - Corporate

2502 N. Huachuca Dr.

Tucson, AZ 85745

p 520.326.0062

f 520.325.0248

### ELKO

1250 Lamoille Hwy. Suite 1048

Elko, NV 89801

p 775.778.0787

f 775.778.0789

### PHOENIX

6040 E. Main St., Suite 186

Mesa, AZ 85205

p 480.707.2600

info@hanlonengineering.com



[www.hanlonengineering.com](http://www.hanlonengineering.com)

**SINGLE SOURCE** Single Sourcing for Professional A&E Services maintains better Quality Assurance/Quality Control through communication and efficiency. As Industry Experts with cutting edge production and modeling tools we are your single source firm.

## ***ARCHITECTURE & ENGINEERING***

BIM

LEED

FEASIBILITY STUDIES

DUE DILIGENCE

PROGRAM DEVELOPMENT

SITE DESIGN

CODE COMPLIANCE

LAYOUT

CONSULTANT COORDINATION

CONSTRUCTION DOCUMENTATION

ADMINISTRATION

MANAGEMENT

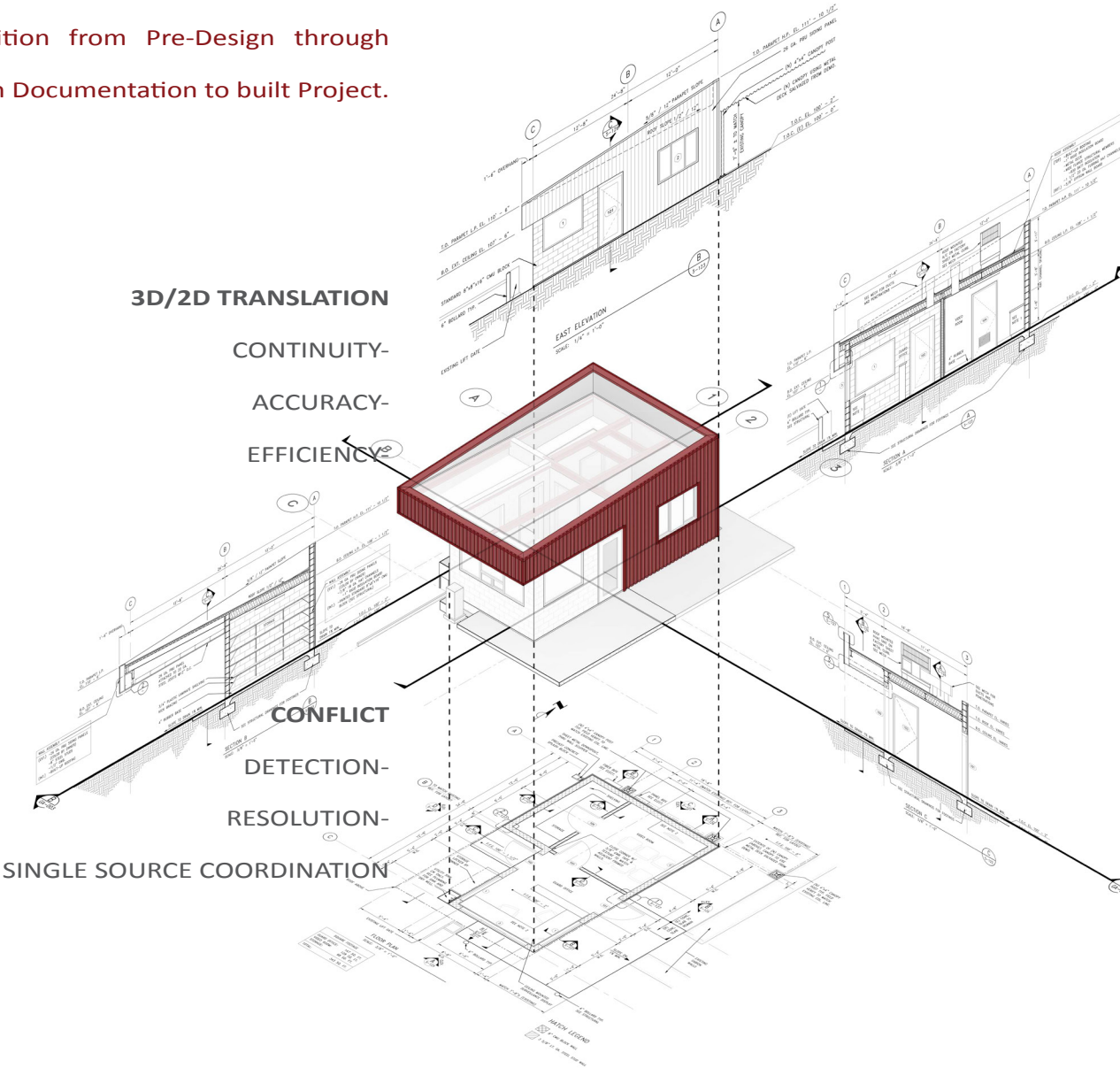
CLOSE-OUTS





Our Professionals use Building Information Modeling software (B.I.M.) to design Projects efficiently and effectively. B.I.M. allows our Team to work simultaneously creating an all-inclusive, information based 3 Dimensional digital model. The inherent accuracy of this process streamlines the transition from Pre-Design through Construction Documentation to built Project.

B.I.M.



**PROJECT**  
DEVELOPMENT-  
DESIGN COMMUNICATION-  
VISUALIZATION-  
PRESENTATION-

**CONSTRUCTION DOCUMENTATION**



# EQUIPMENT MAINTENANCE FACILITY

**PROJECT TYPE** Industrial

**SIZE** 65,750 sf

**SERVICES PROVIDED** Site Analysis

Full Program Analysis

Overall Site Design

Architectural Design

Offices

Vehicle Maintenance Facilities

Fueling Stations

Mechanical Design

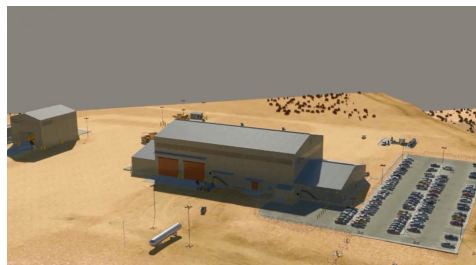
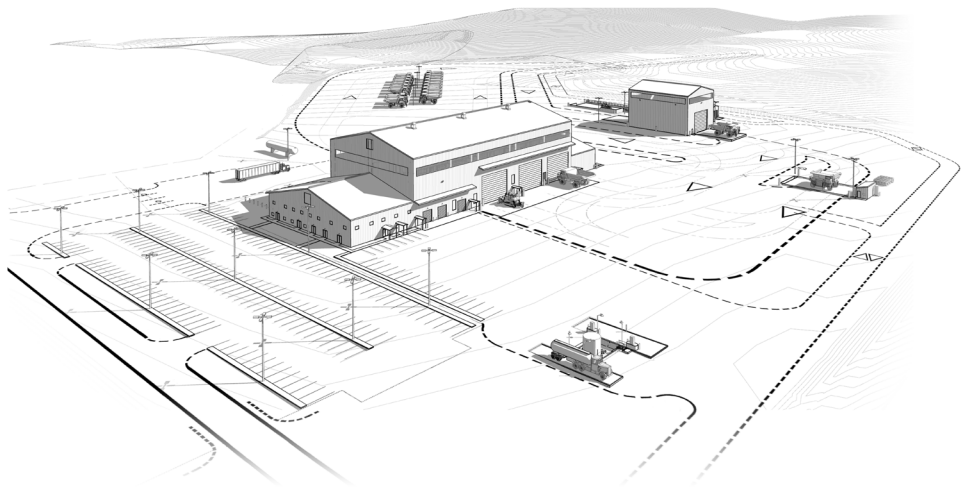
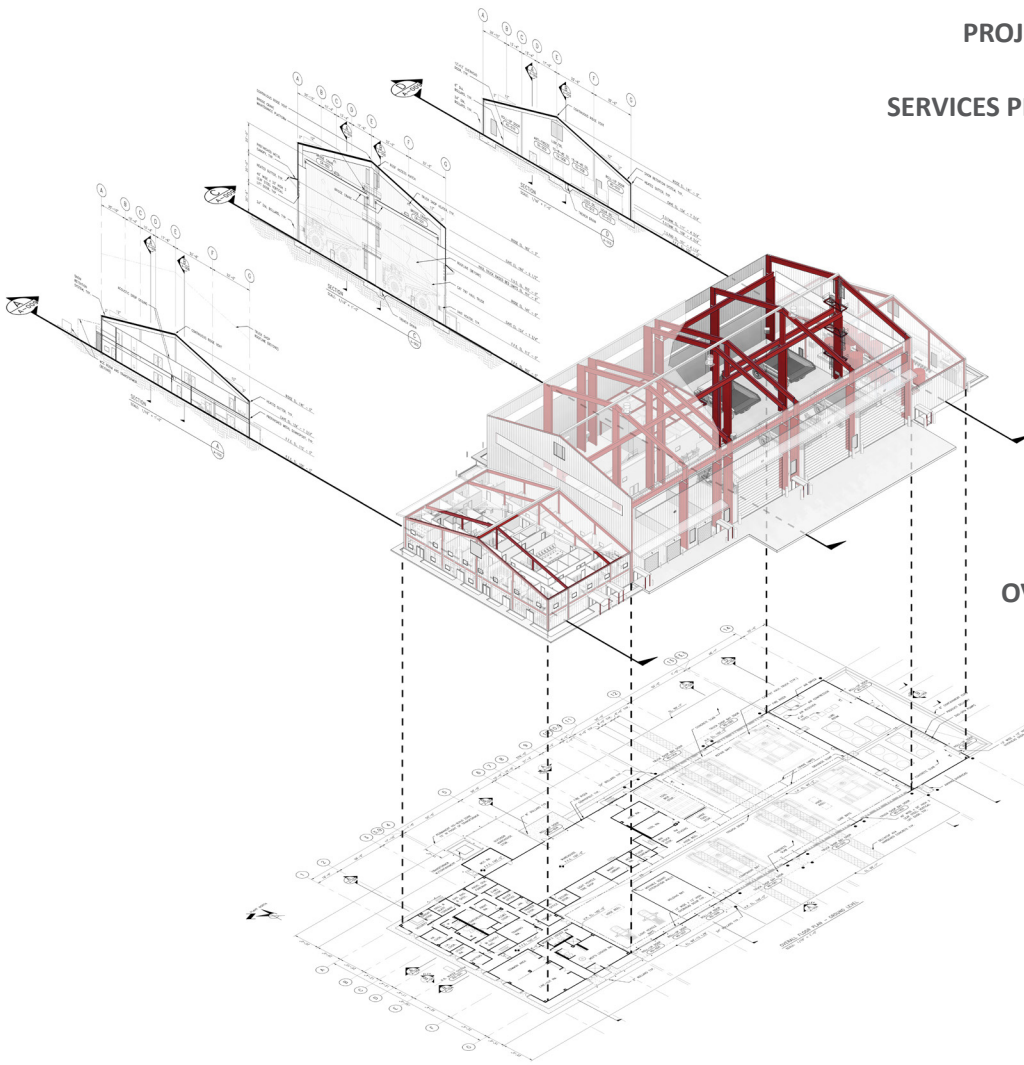
Structural Design

Civil Site Work and Drainage

Electrical Design

Project Management

**OVERVIEW** HEA provided a full feasibility study, design drawings, and cost analysis for the addition of a new heavy vehicle truck maintenance facility, including full administrative and engineering offices, a 7-bay maintenance shop, 2 bay vehicle wash facility, gasoline and diesel fueling stations, and tire changing station. Design factors included integration of new facilities into existing work flow, light and heavy vehicle circulation, separation of restricted access areas, and functional adjacencies.





# OFFICE & LABORATORY EXPANSION

**PROJECT TYPE** Administrative / Lab Expansion

**SIZE** 55,500 sf

**SERVICES PROVIDED** Full Program Analysis

Code Compliance Study

Integrated renovation + addition

As-built drawings

Existing structure and facility review

Feasibility + cost analysis

Architectural design

Offices

Laboratory

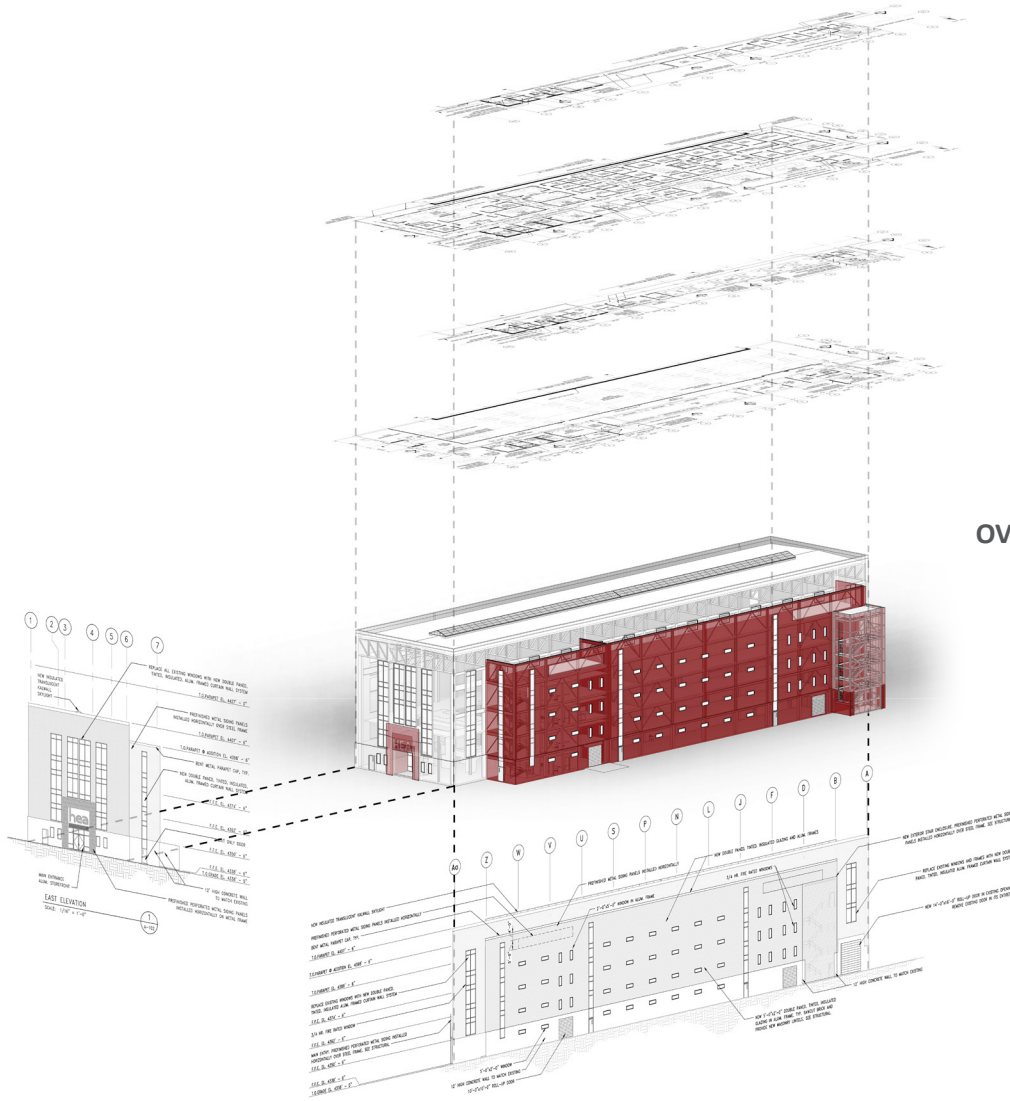
3d Visualization + Renderings

Mechanical Design

Structural Design

Electrical Design

Project Management



**OVERVIEW** HEA executed a full feasibility study including as-built drawings, design drawings, code compliance studies, 3D-renderings, and complete cost analysis for the renovation of a 36,500 sf existing building and design of a 4 story, 19,000 sf addition. The building renovation and addition design consisted of: office space, meeting and conference rooms, break rooms and kitchens, locker rooms and bathrooms, a reference library, reception areas, laboratory including hazard control systems and safety measures, separate employee and guest access points, and delivery bays.



# TESTING & STORAGE FACILITY

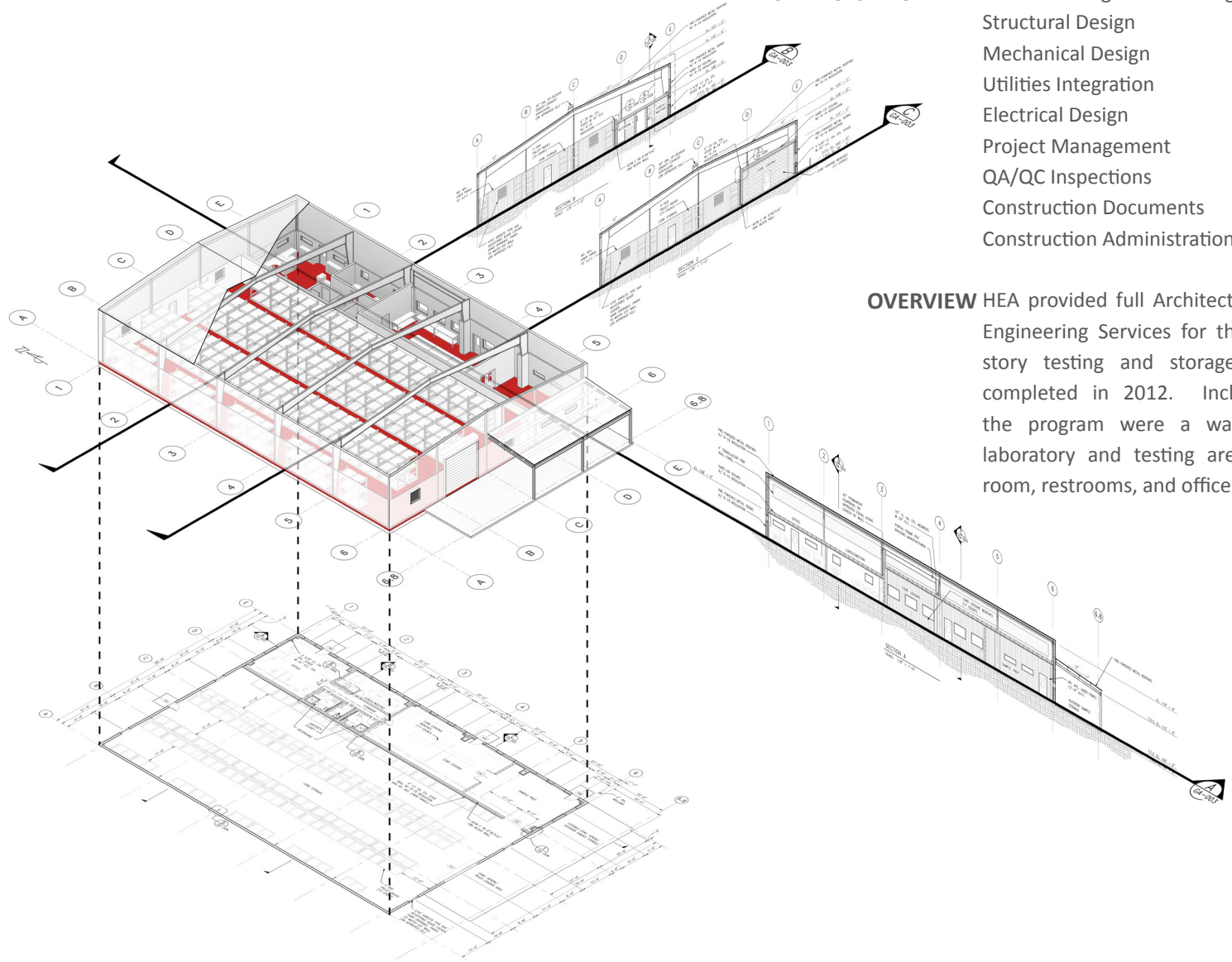
**PROJECT TYPE** Industrial / Warehouse

**SIZE** 10,625 sf

**COMPLETED** 2012

**SERVICES PROVIDED** Civil Site Design and Drainage  
Structural Design  
Mechanical Design  
Utilities Integration  
Electrical Design  
Project Management  
QA/QC Inspections  
Construction Documents  
Construction Administration

**OVERVIEW** HEA provided full Architectural and Engineering Services for this single story testing and storage facility completed in 2012. Included in the program were a warehouse, laboratory and testing area, wash room, restrooms, and offices.





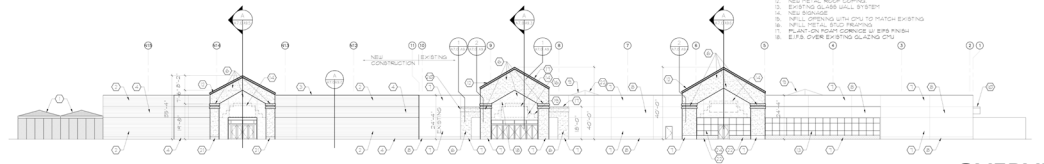


# AAFES - SHOPPETTES

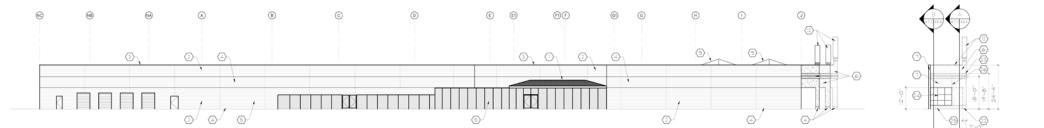
**PROJECT TYPE** Commissary Design  
**SIZE** 200,000 sf Main Shoppette  
 15,000 sf Gate 3 Shoppette

**COMPLETED** 2007

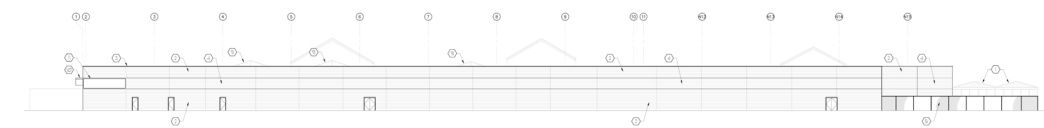
**SERVICES PROVIDED** Civil Site Design and Drainage  
 Structural Design  
 Mechanical Design  
 Utilities Integration  
 Electrical Design  
 Project Management  
 Construction Documents



EAST ELEVATION



SOUTH ELEVATION



WEST ELEVATION



NORTH ELEVATION

**ELEVATION KEYNOTES**

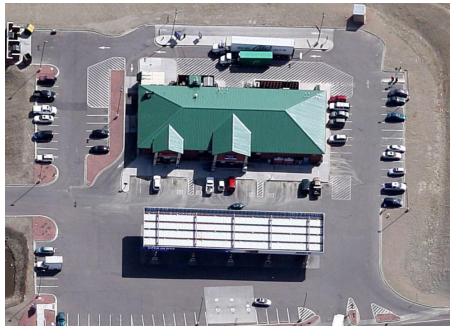
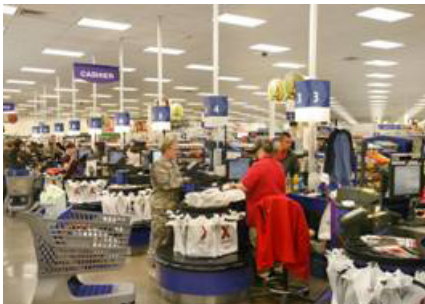
1. EXISTING ROOF LINE	10. LINE OF EXISTING GLAZED CURTAIN WALL
2. NEW ROOF LINE	11. NEW ROOF LINE
3. EXISTING CURTAIN WALL	12. NEW CURTAIN WALL
4. EXISTING GLAZED CURTAIN WALL	13. NEW GLAZED CURTAIN WALL
5. EXISTING ROOF LINE	14. NEW ROOF LINE
6. EXISTING CURTAIN WALL	15. NEW CURTAIN WALL
7. EXISTING GLAZED CURTAIN WALL	16. NEW GLAZED CURTAIN WALL
8. EXISTING ROOF LINE	17. NEW ROOF LINE
9. EXISTING CURTAIN WALL	18. NEW CURTAIN WALL
10. LINE OF EXISTING GLAZED CURTAIN WALL	19. NEW GLAZED CURTAIN WALL
11. NEW ROOF LINE	20. NEW ROOF LINE
12. NEW CURTAIN WALL	21. NEW CURTAIN WALL
13. NEW GLAZED CURTAIN WALL	22. NEW GLAZED CURTAIN WALL
14. NEW ROOF LINE	23. NEW ROOF LINE
15. NEW CURTAIN WALL	24. NEW CURTAIN WALL
16. NEW GLAZED CURTAIN WALL	25. NEW GLAZED CURTAIN WALL
17. NEW ROOF LINE	26. NEW ROOF LINE
18. NEW CURTAIN WALL	27. NEW CURTAIN WALL
19. NEW GLAZED CURTAIN WALL	28. NEW GLAZED CURTAIN WALL
20. NEW ROOF LINE	29. NEW ROOF LINE
21. NEW CURTAIN WALL	30. NEW CURTAIN WALL
22. NEW GLAZED CURTAIN WALL	31. NEW GLAZED CURTAIN WALL
23. NEW ROOF LINE	32. NEW ROOF LINE
24. NEW CURTAIN WALL	33. NEW CURTAIN WALL
25. NEW GLAZED CURTAIN WALL	34. NEW GLAZED CURTAIN WALL
26. NEW ROOF LINE	35. NEW ROOF LINE
27. NEW CURTAIN WALL	36. NEW CURTAIN WALL
28. NEW GLAZED CURTAIN WALL	37. NEW GLAZED CURTAIN WALL
29. NEW ROOF LINE	38. NEW ROOF LINE
30. NEW CURTAIN WALL	39. NEW CURTAIN WALL
31. NEW GLAZED CURTAIN WALL	40. NEW GLAZED CURTAIN WALL
32. NEW ROOF LINE	41. NEW ROOF LINE
33. NEW CURTAIN WALL	42. NEW CURTAIN WALL
34. NEW GLAZED CURTAIN WALL	43. NEW GLAZED CURTAIN WALL
35. NEW ROOF LINE	44. NEW ROOF LINE
36. NEW CURTAIN WALL	45. NEW CURTAIN WALL
37. NEW GLAZED CURTAIN WALL	46. NEW GLAZED CURTAIN WALL
38. NEW ROOF LINE	47. NEW ROOF LINE
39. NEW CURTAIN WALL	48. NEW CURTAIN WALL
40. NEW GLAZED CURTAIN WALL	49. NEW GLAZED CURTAIN WALL
41. NEW ROOF LINE	50. NEW ROOF LINE
42. NEW CURTAIN WALL	51. NEW CURTAIN WALL
43. NEW GLAZED CURTAIN WALL	52. NEW GLAZED CURTAIN WALL
44. NEW ROOF LINE	53. NEW ROOF LINE
45. NEW CURTAIN WALL	54. NEW CURTAIN WALL
46. NEW GLAZED CURTAIN WALL	55. NEW GLAZED CURTAIN WALL
47. NEW ROOF LINE	56. NEW ROOF LINE
48. NEW CURTAIN WALL	57. NEW CURTAIN WALL
49. NEW GLAZED CURTAIN WALL	58. NEW GLAZED CURTAIN WALL
50. NEW ROOF LINE	59. NEW ROOF LINE
51. NEW CURTAIN WALL	60. NEW CURTAIN WALL
52. NEW GLAZED CURTAIN WALL	61. NEW GLAZED CURTAIN WALL
53. NEW ROOF LINE	62. NEW ROOF LINE
54. NEW CURTAIN WALL	63. NEW CURTAIN WALL
55. NEW GLAZED CURTAIN WALL	64. NEW GLAZED CURTAIN WALL
56. NEW ROOF LINE	65. NEW ROOF LINE
57. NEW CURTAIN WALL	66. NEW CURTAIN WALL
58. NEW GLAZED CURTAIN WALL	67. NEW GLAZED CURTAIN WALL
59. NEW ROOF LINE	68. NEW ROOF LINE
60. NEW CURTAIN WALL	69. NEW CURTAIN WALL
61. NEW GLAZED CURTAIN WALL	70. NEW GLAZED CURTAIN WALL
62. NEW ROOF LINE	71. NEW ROOF LINE
63. NEW CURTAIN WALL	72. NEW CURTAIN WALL
64. NEW GLAZED CURTAIN WALL	73. NEW GLAZED CURTAIN WALL
65. NEW ROOF LINE	74. NEW ROOF LINE
66. NEW CURTAIN WALL	75. NEW CURTAIN WALL
67. NEW GLAZED CURTAIN WALL	76. NEW GLAZED CURTAIN WALL
68. NEW ROOF LINE	77. NEW ROOF LINE
69. NEW CURTAIN WALL	78. NEW CURTAIN WALL
70. NEW GLAZED CURTAIN WALL	79. NEW GLAZED CURTAIN WALL
71. NEW ROOF LINE	80. NEW ROOF LINE
72. NEW CURTAIN WALL	81. NEW CURTAIN WALL
73. NEW GLAZED CURTAIN WALL	82. NEW GLAZED CURTAIN WALL
74. NEW ROOF LINE	83. NEW ROOF LINE
75. NEW CURTAIN WALL	84. NEW CURTAIN WALL
76. NEW GLAZED CURTAIN WALL	85. NEW GLAZED CURTAIN WALL
77. NEW ROOF LINE	86. NEW ROOF LINE
78. NEW CURTAIN WALL	87. NEW CURTAIN WALL
79. NEW GLAZED CURTAIN WALL	88. NEW GLAZED CURTAIN WALL
80. NEW ROOF LINE	89. NEW ROOF LINE
81. NEW CURTAIN WALL	90. NEW CURTAIN WALL
82. NEW GLAZED CURTAIN WALL	91. NEW GLAZED CURTAIN WALL
83. NEW ROOF LINE	92. NEW ROOF LINE
84. NEW CURTAIN WALL	93. NEW CURTAIN WALL
85. NEW GLAZED CURTAIN WALL	94. NEW GLAZED CURTAIN WALL
86. NEW ROOF LINE	95. NEW ROOF LINE
87. NEW CURTAIN WALL	96. NEW CURTAIN WALL
88. NEW GLAZED CURTAIN WALL	97. NEW GLAZED CURTAIN WALL
89. NEW ROOF LINE	98. NEW ROOF LINE
90. NEW CURTAIN WALL	99. NEW CURTAIN WALL
91. NEW GLAZED CURTAIN WALL	100. NEW GLAZED CURTAIN WALL

**OVERVIEW** HEA provided Architectural and Engineering Services for Ft. Carson AAFES Gate 3 Shoppette and Main Shoppette in 2006. Included in the program were Food Courts, Offices, Retail, Supermarkets, Home Goods, Warehouse, and Bathroom Facilities. Gate 3 Shoppette had a Fuel Island for cars & trucks.





# AAFES - SHOPPETTES II



GATE 3 SHOPPETTE

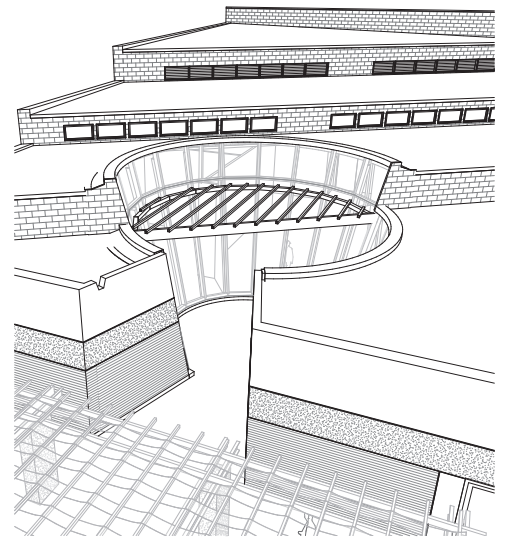
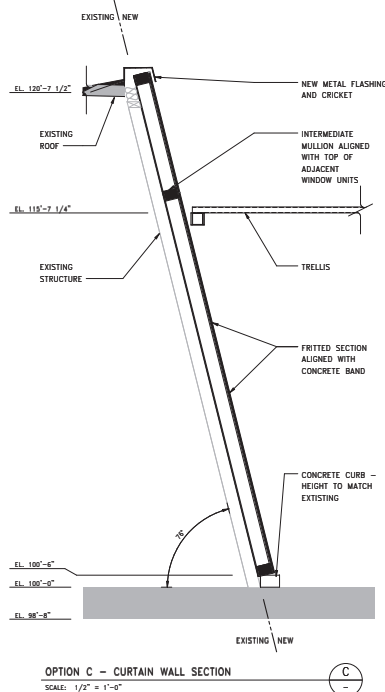
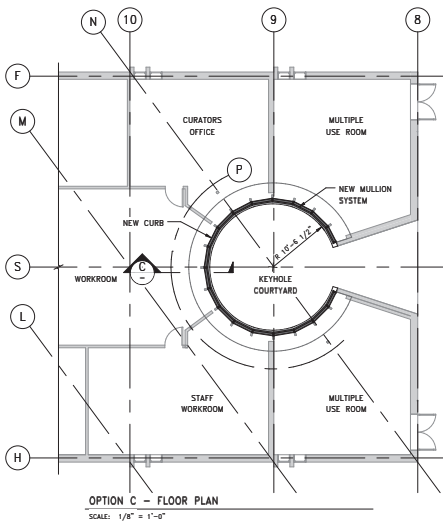
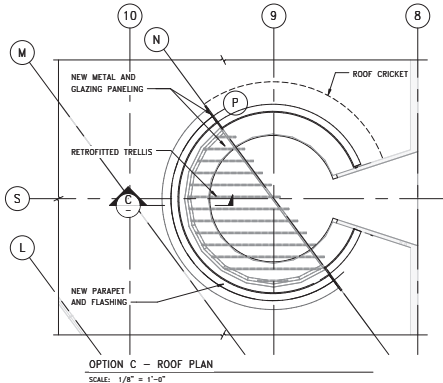


# COMMERCIAL FACILITY UPGRADE

Commercial **SERVICES** Architecture  
25,000 sf **PROVIDED** Overall Plan  
2013 Drainage  
Structural Design  
Mechanical Design  
Utilities Integration  
Project Management

**OVERVIEW** HEA provided full Architecture & Engineering Services for the Gila River Indian Community. The scope of work included existing construction and product research, upgrades in facade & roofing detailing to alleviate leakage, solar heat gain, glare and energy loss. HEA completed design Architecture & Engineering drawings and construction documents. Charged to maintain architectural aesthetic with upgrades due to age and significance of the structure to the Community.

## OPTION C | CURTAIN WALL

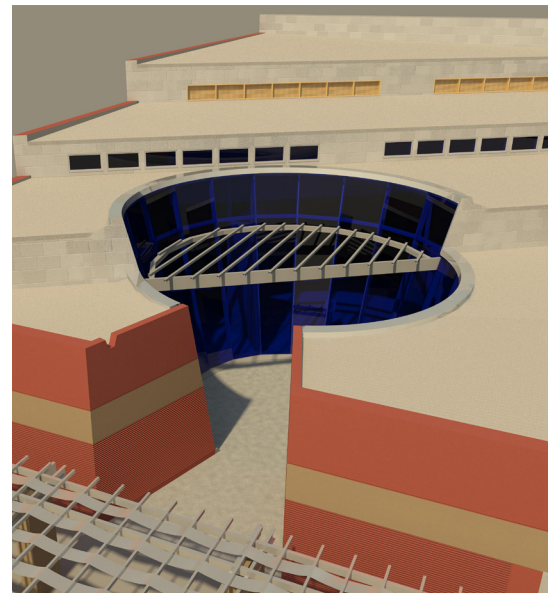


OPTION C - 1  
SCALE: N.T.S.

OPTION C - KEYHOLE COURTYARD

GILA RIVER INDIAN COMMUNITY, ARIZONA - HUHUGAM HERITAGE CENTER

C1  
08-01-18

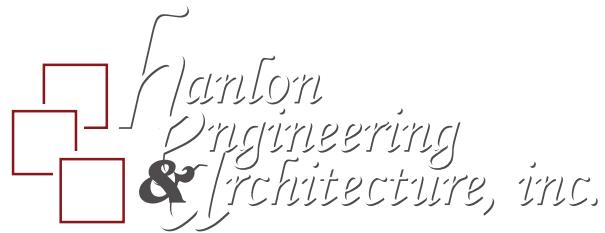


Design

Planning

Development

Management



**Tucson**

Phoenix

Elko

 [www.hanlonengineering.com](http://www.hanlonengineering.com) |